



Annual Report

Jan. 1, 2010 to Dec. 31, 2010

Central Community House
At Our House, People Are Central

***Celebrating
75 Years!***



At Our House People Are Central





Central Community House
At Our House, People Are Central

1150 E. Main St.
Columbus, Ohio 43205
614-252-3157 www.cchouse.org

Our Mission

Central Community House has been serving the people of near east side Columbus since 1936 in the settlement house tradition. Our mission is to empower people to reach their full potential, to be self-supporting and to live cooperatively with all others.

To our fellow friends, family and supporters:

This year marks Central Community House's 75th anniversary!

For some, 75 years is a lifetime full of memories, challenges and wonder. For others, 75 years is only the beginning - full of hope and anticipation. At CCH, we believe we have a wonderful opportunity to look back and celebrate the legacy left on our community while also moving forward recognizing there is still a lot of work to be done.

As we reflect on our past accomplishments we feel a sense of pride knowing that Central Community House has been, and continues to be, a stable source of support for our community residents. Our programs provide services for each individual no matter where they are in life - from youth to young professionals to seniors. Programs such as Early Education Child Care, Youth and Family Services and Community Services continue to be needed in our community and will be even more of a necessity as charitable organizations, corporate sponsors and individual contributors realign their own financial priorities against their needs.

It is evident in currently high unemployment rate, the unprecedented housing crisis and the increasing number of discontinued social services how dismal the reality of our economy is - but there is hope. Hope in organizations such as Central Community House that understands the true beneficiaries of our services are not limited to those who receive help, but also to those who have a passion for helping others in need.

We, at Central Community House, do not idly stand still and watch the world transform around us. We believe it is imperative for social service organizations to act globally but think locally. While the basic needs and services have not dramatically changed over the last 75 years, the way in which we engage with our community and the world around us certainly has. We will continue to rise up to meet the challenges of a growing and evolving community and think of innovative ways to seamlessly provide support to those in need even in the midst of financial devastation. However, we cannot do it alone, nor is it our desire to act alone. We are not a community of one but we are indeed part of one community. With a dynamic staff and leadership team in place, along with a moving force of hundreds of caring individuals in the greater community, I am certain that many more successful decades are in our future.

I offer this letter of inspiration to you as Central Community House's continued commitment to be a lifeline of support for people in times of crisis and a valuable resource helping children, families and seniors achieve the quality of life that is deserved by all. Thank you for your support, and we look forward to 75 more years of community spirit!

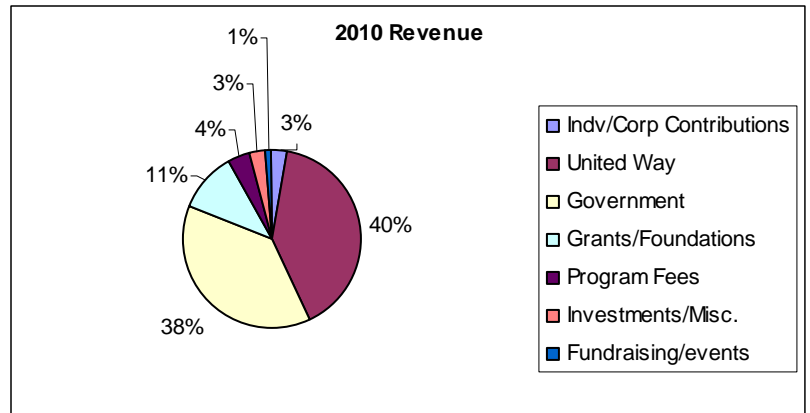
Neighborly,

Tamara S. Cross
President, Board of Trustees

Fiscal Reports Jan. 1, 2010-Dec. 31, 2010

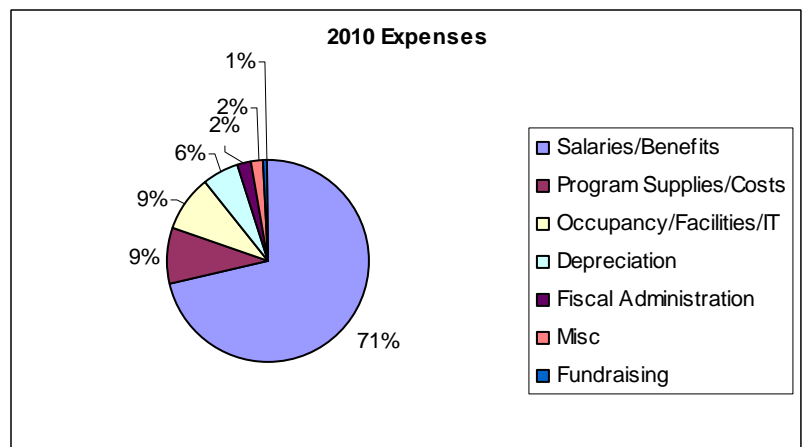
Revenue

Individual/	
Corp Contributions	46083.12
United Way	627897.47
Government	596188.34
Grants/Foundation	172165.65
Program Fees	58746.80
Investments/Misc.	52431.61
Fundraising/events	11414.70
TOTAL	1564927.69



Expenses

Salaries/Benefits	1146927.83
Program Supplies/Costs	150443.62
Occupancy/Facilities/IT	145825.15
Depreciation	92401.76
Fiscal Administration	39340.75
Misc	31736.84
Fundraising	8004.50
TOTAL	1614680.45



Complete audited financial statement is available upon request. Independent audit performed by Parms and Company, LLC.

CCH Board of Trustees

Tamara Cross, *President*
 Monika Roberts, *Vice President*
 Laura Fuller, *Treasurer*
 Tina Watkins, *Secretary*
 Ron Arledge
 Jim Arter
 Dr. Ron Bloomfield
 Heather Bowden

Scott Campbell
 Allison Dassani
 Shawn Dingus
 Anneka Drafton
 Laura Fuller
 Alisa Hillmon
 Felix Klebe
 Art Krumsee

Kelly McNeil
 Matt Schlingman
 John Sunami
 Annette Tucker
 Tina Watkins
 Linda Wilkins

Executive Director
 Pam McCarthy

Donors

Reflects donations made from Jan. 1, 2010 through Dec. 31, 2010.

Ackley, Stanford	Fred G. Pressley, Jr.	Leo Yassenoff Foundation	Saul, Brian and Karen
Alexander, Catherine	Fuller, Laura	Linsey, Miriam	Schlingman, Matthew & Candace
Arledge, Ronald	Glimcher, Herbert	Livisay, Maggie*	Simon, Mary
Atzberger, Tom and Chris	Gmeiner, Kathleen	Livisay, William*	Smith, Connie
Bailey Cavalieri LLC	Gottlieb, Roy*	McCarthy, Pam and Bob	Smith, Judy*
Barret, Alison*	Grear, Nevonina	McCarthy, Tim*	Smith, Robinette
Beech, Pam	Hardin-Cook, John & Alyce	McLymont, Lisa*	Starck, Heather
Bloomfield Ronald & Cormac	Harris, Serena*	McNeil, Kelly	Stassfurth, Bruce
Cardinal Health Foundation	Hildreth Foundation	Meadows, Charles	Stassfurth, William
Carter, Willa	Hillmon, Alisa	Miller, Barbara & Russ	Sunami, John & Mari
Case, Nancy and Larry	Hillmon, Chaz*	Monika Roberts	Swearingen, Rod
Collins, Juanita	Hopkins, Mary Helen	Moore, Ed*	Truist-Battelle
Colman, Alison*	Huff, Allen*	Muller, David	Twiggs, Ann & Shaffer, Bill*
Columbus Woman's Club	Hughes, Thomas & Corrine	Neal, Thelma L.	Unity East Church
Coulter, Charnel	JC Penney - Eastland	Ohio Children's Foundation	Walker, Demetries
Cox, Dennis and Tracy	Jeffrey, Robert H.	Pace, Carlos J.	Wandel, Bob & Sally
Crawford, Justina*	Jeffrey, Robert H.	Parks, Allison*	Weaver, Liz & Tony
Crego, Rosemary	Jenkins, Martin	Phifer, Kimani	White, Alveta
Cultural Awareness Club	Johnson, Margo	Powell-Riley, Anne	Wilkins, Linda
Donaldson, Christine	Johnson, Vera	Ramey, John	Williams, Katherine
DJ BHB*	Kahn, Benita*	Riley, Rose	Willis, Carmen
Drafton, Anneka	Katz, Tim*	Roberts, Monika	Willis, Catherine
First Community Church	Kilroy, Mary Jo	Rose, Mary K.	Womack, Elsia
Fox, Adam	Klebe, Felix	Sagrilla, Jamie Black	
	Krumsee, Art		

**In addition to those marked (*) in the above list, the following organizations have made Contributions made to create the Walter and Marian English Center for Art and Community at 1251 Bryden Road (through Dec. 31, 2010.)*

CAPA—Pierce to the Soul Production
First Community Church
Nationwide Insurance Foundation
Niehoff Charitable Fund of The Columbus Foundation
Walter and Marian English Foundation
Robert B. Hurst Fund of The Columbus Foundation



Donations to Central Community House are tax deductible to the extent allowable by law, limited to the excess of the donation contributed over the fair market value of goods or services. Central Community House is a 501(c)3 organization; tax ID number is 31-4379438.

In Honor

In Honor of Jim Arter, Sr. by Jim Arter*
In Honor of Ron Arledge by Becky Fuess
In Honor of Justina Crawford by Nick Dragga*
In Honor of Peter and Pidge Diehl by Michael Diehl
In Honor of Board Service of Nationwide Associates
Tamara Cross, Monika Roberts, Jeff Heyer-Jones by
Nationwide Insurance Foundation
In Honor of Kimani Phifer by Joel Williams
In Honor of James Rook by Janice Rook
In Honor of James F. & Norma Rook Family by Sarah J. Reed
In Honor of Robert Wandel by Beth J. Wandel
In Honor of Robert Wandel by Audrey Butler

In Memory

In Memory of Maude Lela Frye Apgar by Randy Apgar
In Memory of Barbara Blair
Jen Gilmore
Melodee Kornacker & Albert Moore
Laurie and Michael Levison
Mid Ohio Oral Surgery Inc.
Linda and Howard Schottenstein
Andrea Jones
Deborah Stern
Carolyn Carter
Rick and Rena Vesler
Phyllis, Pam and Toni Zierler
Beth Simpson-Hall
Jean Harlan
Phyllis & Joseph Cohen
Florence Cabakoff
Allan and Judith Blair
Hocking Hills Bike Club
Martha Reeder
Krebs
Veronica Forgacs
DERR-SEDO
Muriel Goodman
In Memory of Jesse Cloyd
Dora Sanese
D.F. and A.J. Gales
Lorene Simmons
Leo and Estelle Paquette
Donald Chenoweth
Brian Wetzel Insurance Agency
Eugene and Anna Patterson
Stuart and Sondra Schwotzer
Michael and Geraldine Hogan
Cheryl and Augustus Parker
Annie M. Garraway
Debra and Ivery Foreman
St. John A.M.E. Church
Jessica Ruff
Lisa Cosey
Centenary United Methodist Church
Matthew Ruff

In Memory of Timothy "TJ" Collins by GCAC
In Memory of Marvin Connor by Olde Towne East
Neighborhood Assn.
In Memory Don Ferrell by Pam and Bob McCarthy
In Memory of Jack Fuess by Becky Fuess
In Memory of Mary Merrill by Bill Merrill
In Memory of Irene Roberts
by Peggy Roberts
by Rosemary Simmons
In Memory Margaret Sanders by Pam and Bob McCarthy

Community Partnerships & Special Event Support

AEP - Partnership With Ohio
Bailey Cavalieri
Benua Foundation Field of Interest Fund of The
Columbus Foundation
CareSource
Columbus Culinary Institute at the Bradford School
Black Creek Bistro
Community Health Funders Collaborative
J. Ray & Lillian Waller Fund of The Columbus Foundation
Henry E. Parkinson fund of The Columbus Foundation
JC Penney – Eastland
Kroger - Community Rewards Program
Nationwide Insurance
Puffin Foundation
Reinberger Foundation
Women's Fund

Thanks also to the many companies, organizations and friends who donate items to our Back to School Bash, Holiday Help, Free Store and other events/programs.

Programs and services of Central Community House are partially supported by governmental support through

City of Columbus
Franklin County Children Services
Franklin County Commissioners
Department of Job and Family Services
Senior Options and Senior Services Levy



Early Education Child Care Center

The CCH Early Education Child Care Center is alive with the sounds of babies trying to make words, toddlers playing with blocks and books being read aloud to preschoolers. There are six lively classrooms filled with art, books, cozy sleeping areas, pint-sized tables and bathrooms and wonderful children. Age groups include infants (six weeks to 18 months), toddlers (18 months to three years), and preschool (three to five years). The CCH Early Education Child Care Center is designed with two goals: to provide a safe environment for the care of children while parents work or attend school; and to teach critical skills preparing children to succeed in school and in life.

In order to increase the percentage of children in Franklin County who enter kindergarten socially, physically, and emotionally ready to learn, the CCH Child Care Center incorporates developmentally age-appropriate activities to stimulate the child's ability to grow in all critical areas. These areas include: social, fine and gross motor skills, early math, language and literacy, self-help, and science and nature skills. In addition to quality, education-focused care for the children, the Child Care Center offers holistic services for parents in order to support them in efforts to overcome barriers to family stability. Title XX subsidies are also accepted for those who qualify.



77 Families served

70 Parents able to work due to
Child Care

7 Parents able to attend school

98% Families served living at or
below Federal Poverty Line

Transit Arts

Transit Arts, a project of the Columbus Federation of Settlements based at CCH, brings arts instruction, outstanding opportunities and mentorship to youth throughout seven Columbus settlement sites. See samples of their work at www.transitarts.com.

632 Art in the House participants
(ages 5-12)

449 Transit Arts participants (ages
12-21)

75 Artists in public performances
or exhibitions

13,000 Estimated live audience
members



Youth and Family Services

Central Community House Youth and Family Services Department offers a variety of programs to aid in the cultural, social and educational development of the area youth, while providing opportunities to strengthen families. Parents and community residents are offered a variety of programs designed to promote strong, healthy families and stable households.

School-age children enjoy safe, enriching activities in our Community's Promise Afterschool Program through the school year and Summer Challenge Day Camp in the summer months. Teens come together for leadership opportunities, Transit Arts and Teen Nights. Families can find assistance they may need in challenging times through Emergency Assistance and the Family-to-Family program, a collaboration with Franklin County Children's Services.

Afterschool participants 50
Summer Camp participants 50
Family-to-Family 53



Community Services

1500 Hours use of Computer Lab

400 Families served with Holiday Help/
Firefighters for Kids

2754 Requests processed through Intake/
Referral process

845 Households helped through Financial
Fresh Start and Direct Aid

386 Residents engaged in Community
Organizing

175 Older adults enrolled in Senior
Program

285 Tax returns filed through Volunteer
Income Tax Assistance

Our Community Services Department strives to provide the neighborhood with the necessary support to lead to increased self-sufficiency of individuals and families. Through a comprehensive intake and referral program, on average over 200 requests for emergency aid are processed each month. In addition, Community Organizing and programs such as the Computer Lab, Holiday Help, Senior Program and Community Dinners are offered, contributing to a greater quality of life throughout the community.



We respect the worth and dignity of all people.

We believe in inclusiveness and social justice.

We respect pluralism and diversity.

We believe in honesty and integrity.

**We believe we are accountable to other people and
need to keep their trust.**

We are committed to strive for excellence.

We believe we are stewards of resources.

We believe in community.



Central Community House
At Our House, People Are Central

1150 E. Main St.
Columbus, Ohio 43205
614-252-3157
www.cchouse.org